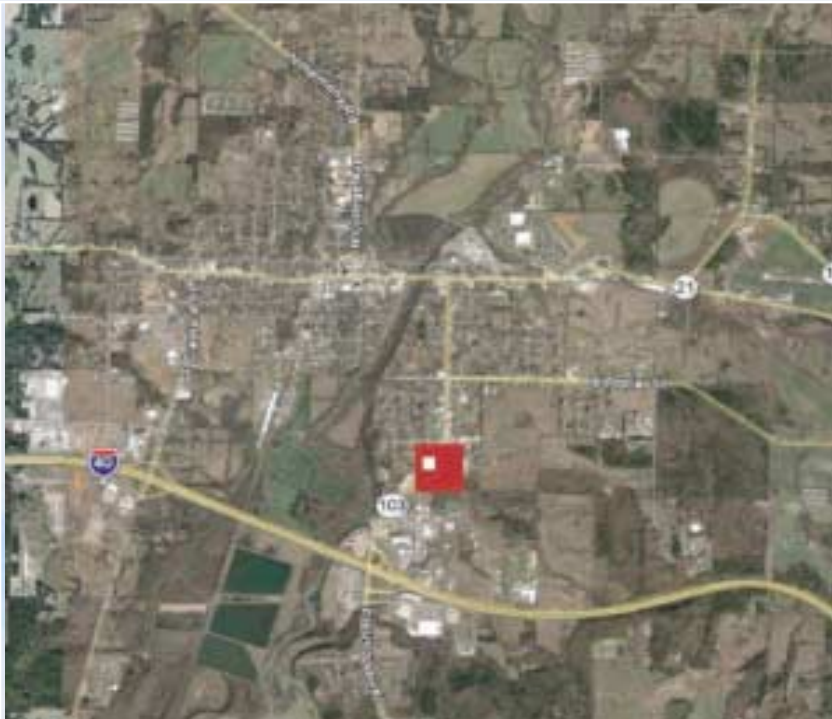


FOR LEASE

Southgate Shopping Center Clarksville, AR 72830



- **County Seat of Johnson County**
- **Johnson County Population: 24,494 people**
- **City Population: 8,730 people**
- **Households: 3,228**
- **Median Income: \$30,474**

CentralRealty
commercial real estate



Jason Fine
331 West Thornton Avenue
St. Louis, MO 63119
314.862.5557 ext. 23
888.222.2446 ext. 23
314.862.7996 fax
www.central-realty.com

Southgate Shopping Center

1109-1147 Rogers Street
Clarksville, AR 72830

CentralRealty
commercial real estate

Jason Fine

331 West Thornton Avenue

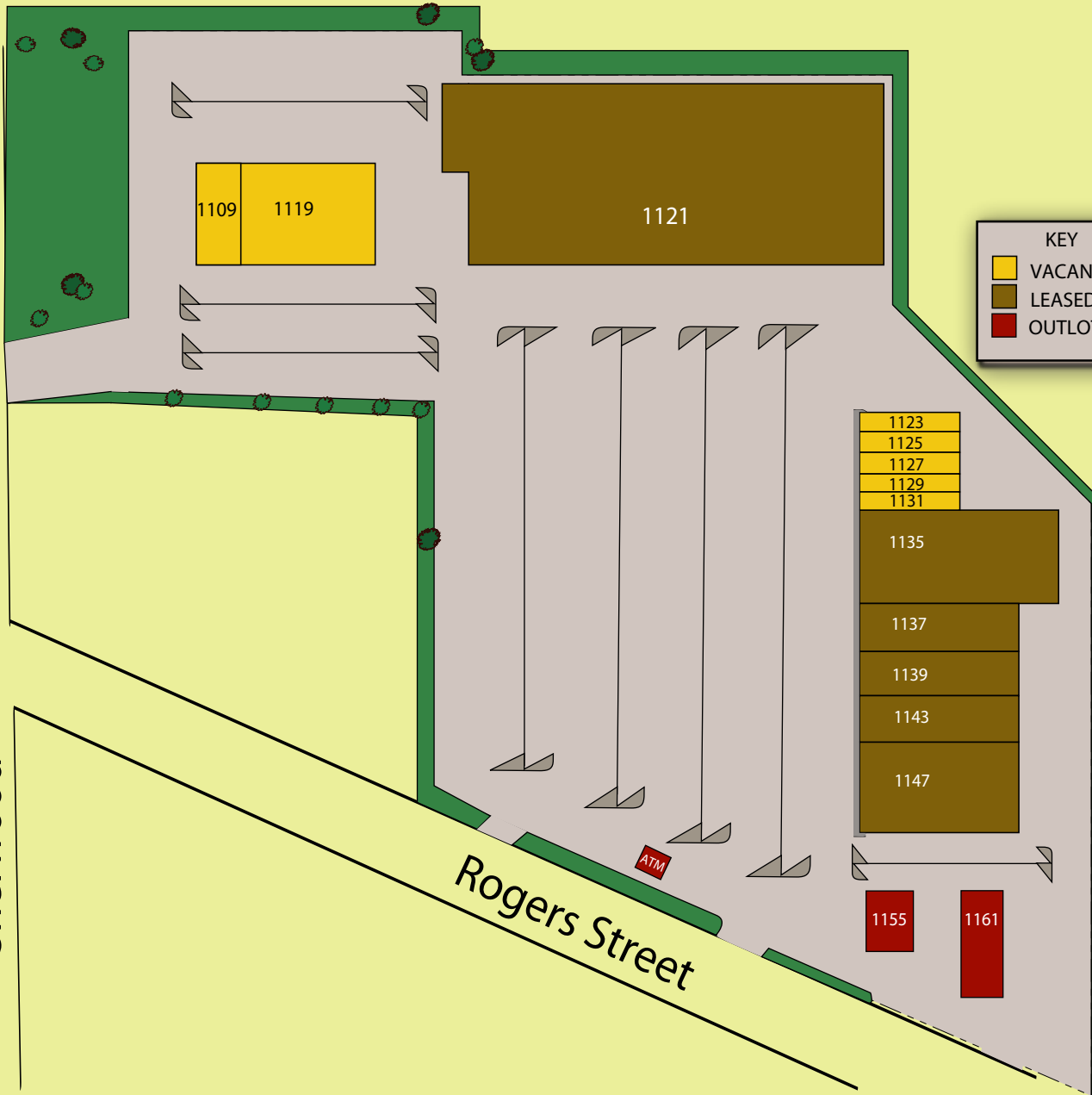
St. Louis, MO 63119

314.862.5557 Ext. 32

888.222.2446 toll free Ext. 32

314.862.7996 fax

www.central-realty.com



KEY

	VACANT
	LEASED
	OUTLOT

SITE SUMMARY
1109-1147 Rogers Street
Clarksville, AR 72830

1109	Available	1,750 SQ. FT.
1119	Available	5,250 SQ. FT.
1121	Atwood's	54,962 SQ. FT.
1123	Available	1,000 SQ. FT.
1125	Available	1,500 SQ. FT.
1127	Available	1,500 SQ. FT.
1129	Available	1,000 SQ. FT.
1131	Available	1,000 SQ. FT.
1135	Stage	12,200 SQ. FT.
1137	Emerald Dragon	4,400 SQ. FT.
1139	Hibbett Sports	6,600 SQ. FT.
1143	Factory Connection	4,950 SQ. FT.
1147	Dollar General	12,650 SQ. FT.
Total Available		108,762 SQ. FT.
1155	Pizza Hut	1,800 SQ. FT.
1161	Sonic Drive-In	1,100 SQ. FT.
	ATM First Security	64 SQ. FT.