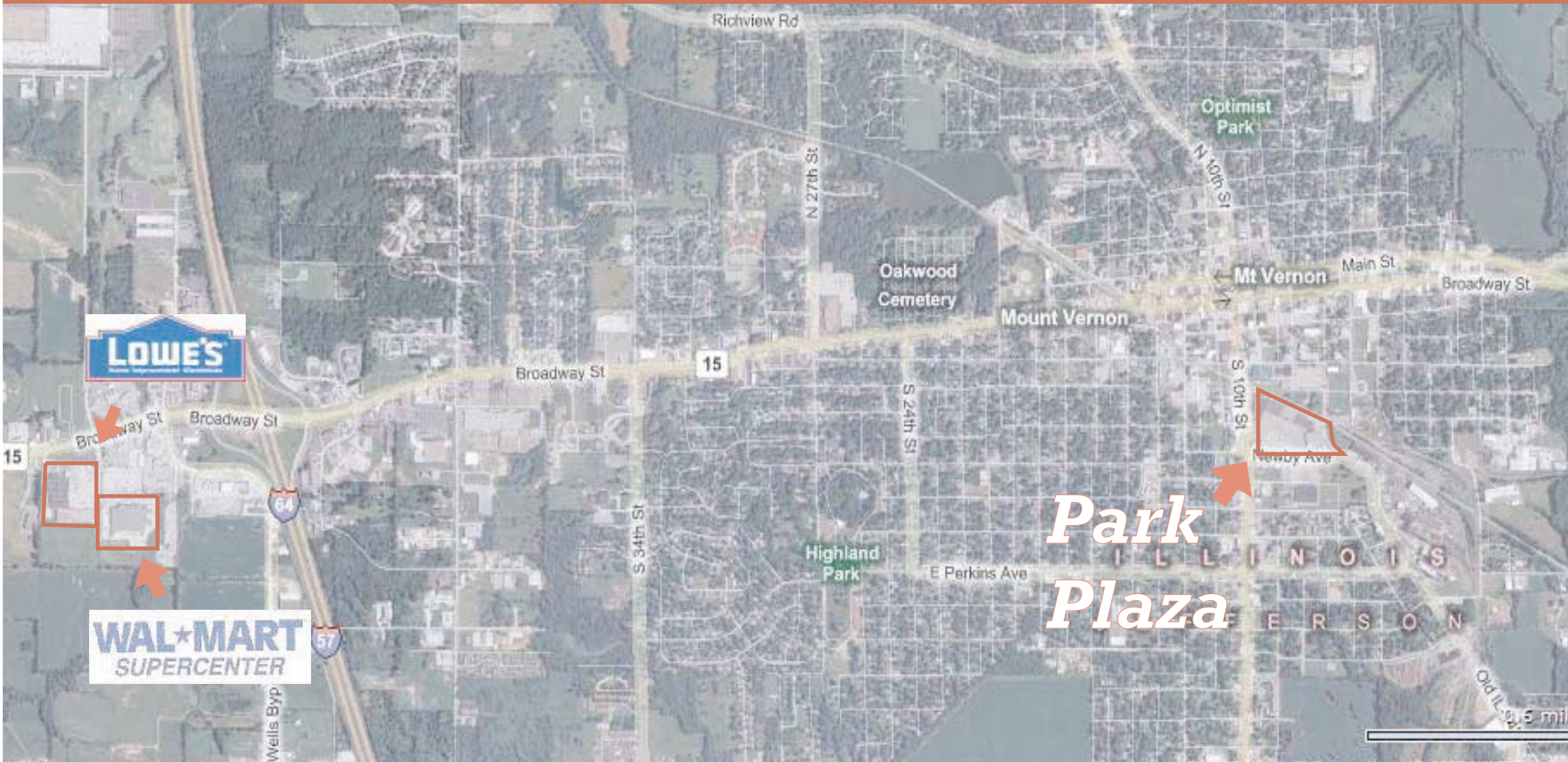


# FOR SALE

## Park Plaza Mt. Vernon, IL



- City in Jefferson County
- Jefferson County Population: 40,168 people
- City Population: 16,319 people
- Median Age: 38
- Median Income: \$32,134

**CentralRealty**  
commercial real estate

Bob Horn  
331 West Thornton Avenue  
St. Louis, MO 63119  
314.862.5557 ext. 15  
888.222.2446 ext. 15  
314.862.7996 fax  
[www.central-realty.com](http://www.central-realty.com)

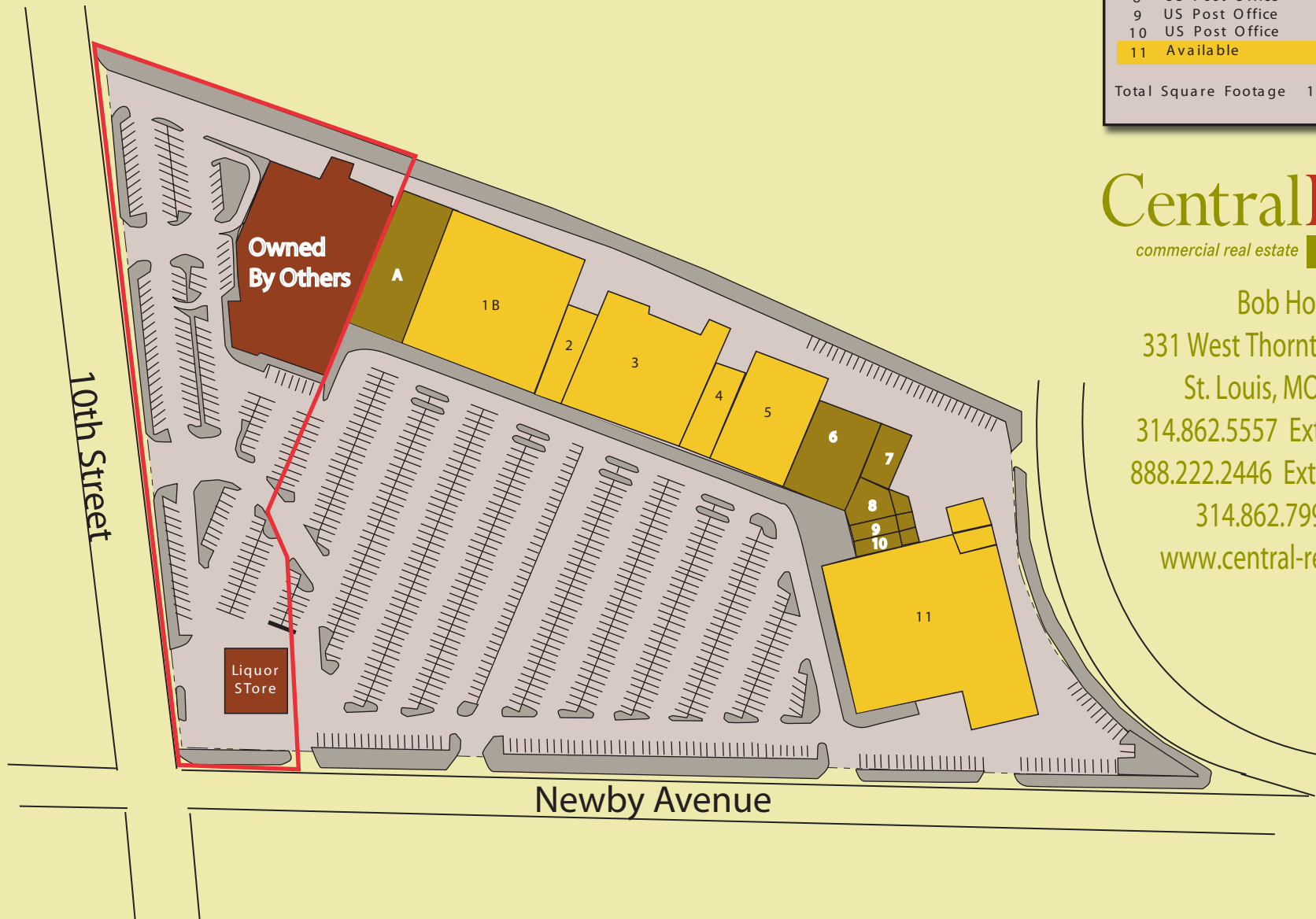
# Park Plaza

## Mt. Vernon, Illinois



KEY	
<span style="display:inline-block; width:15px; height:15px; background-color:yellow; border:1px solid black;"></span>	VACANT
<span style="display:inline-block; width:15px; height:15px; background-color:darkred; border:1px solid black;"></span>	ANCHOR
<span style="display:inline-block; width:15px; height:15px; background-color:olive; border:1px solid black;"></span>	LEASED

SITE SUMMARY		
10th & Newby Avenue Mt. Vernon, IL 62864		
A	One Stop Flooring	12,960 SQ. FT.
1B	Available	30,400 SQ. FT.
2	Available	4,800 SQ. FT.
3	Available	24,200 SQ. FT.
4	Available	4,800 SQ. FT.
5	Available	15,500 SQ. FT.
6	Family Dollar	10,050 SQ. FT.
7	US Post Office	3,000 SQ. FT.
8	US Post Office	3,350 SQ. FT.
9	US Post Office	1,600 SQ. FT.
10	US Post Office	1,600 SQ. FT.
11	Available	50,800 SQ. FT.
Total Square Footage		162,860 SQ. FT.



**CentralRealty**  
commercial real estate

Bob Horn

331 West Thornton Avenue  
St. Louis, MO 63119  
314.862.5557 Ext. 15 phone  
888.222.2446 Ext. 15 toll free  
314.862.7996 fax  
[www.central-realty.com](http://www.central-realty.com)