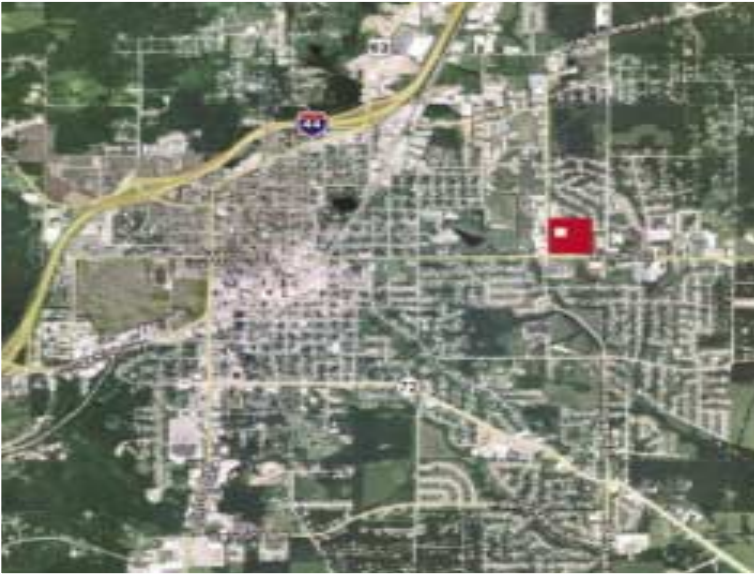


FOR LEASE

Forum Plaza Rolla, MO 65401



- **County Seat of Phelps County**
- **Phelps County Population: 42,248 people**
- **City Population: 18,488 people**
- **Households: 7,280**
- **Median Income: \$29,941**

CentralRealty
commercial real estate



Greg Patterson
331 West Thornton Avenue
St. Louis, MO 63119
314.862.5557 ext. 25
888.222.2446 ext. 25
314.862.7996 fax
www.central-realty.com

FORUM PLAZA

Rolla, Missouri 65401



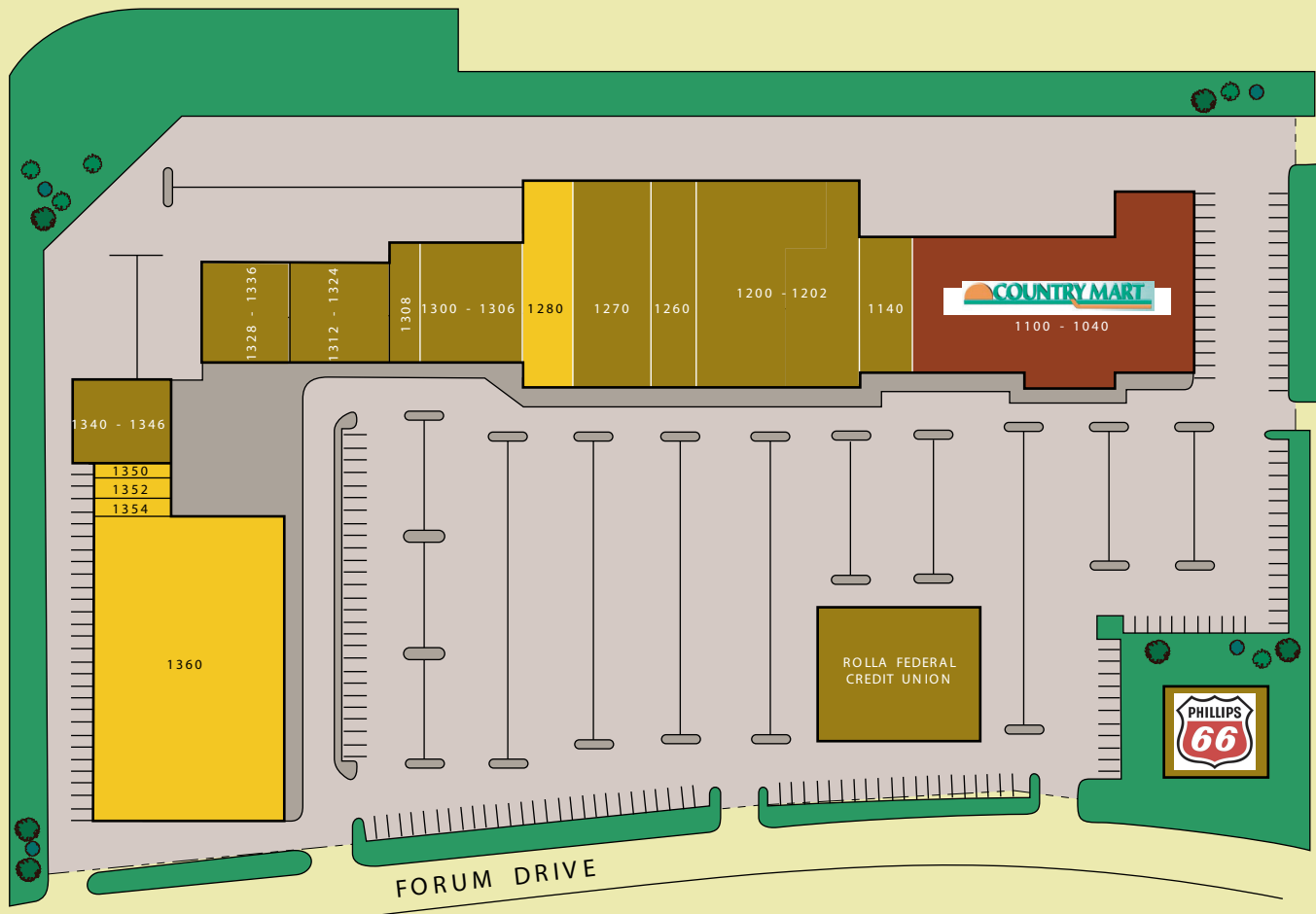
KEY

- VACANT
- ANCHOR
- LEASED

SITE SUMMARY

1040-1360 Forum Drive & 10th Street
Rolla, MO 65401

1360	Available	30,962 SQ. FT.
1354	Available	1,200 SQ. FT.
1352	Available	900 SQ. FT.
1350	Available	900 SQ. FT.
1340-1346	El Maguey Mexican Restaurant	4,900 SQ. FT.
1328-1336	Factory Connection	4,800 SQ. FT.
1312-1324	Shoe Sensation	6,400 SQ. FT.
1308	Radio Shack #8558	2,500 SQ. FT.
1300-1306	Goodwill	7,500 SQ. FT.
1280	Available	7,600 SQ. FT.
1270	Family Dollar	9,600 SQ. FT.
1260	Glik's	6,800 SQ. FT.
1200-1202	Central Ozark Private Industry Council	16,000 SQ. FT.
1140	The Liquor Cabinet	3,037 SQ. FT.
1100-1040	Country Mart Grocery	30,938 SQ. FT.
Total Square Footage		134,037 SQ. FT.



CentralRealty

commercial real estate

Greg Patterson
 331 West Thornton Avenue
 St. Louis, MO 63119
 314.862.5557 Ext. 25 phone
 888.222.2446 Ext. 25 toll free
 314.862.7996 fax
www.central-realty.com